

# COMPANY PROFILE

**karloskar**  
South Africa

## FACILITIES

Kirloskar Oil Engines has a nation-wide network of operations that delivers high-quality products. We have four facilities with a workforce of more than 3100 employees. We have advanced manufacturing plants covering 250 000 m<sup>2</sup> in India at our Pune, Nashik, and Kolhapur plants. With an annual manufacturing capacity of 230 000 engines, our state-of-the-art facilities, ensure that our engines are manufactured in an optimised and eco-friendly manner.

## QUALITY

We take numerous measures to ensure that each of our products is always up to the highest standards that our clients expect from us and we expect from ourselves.

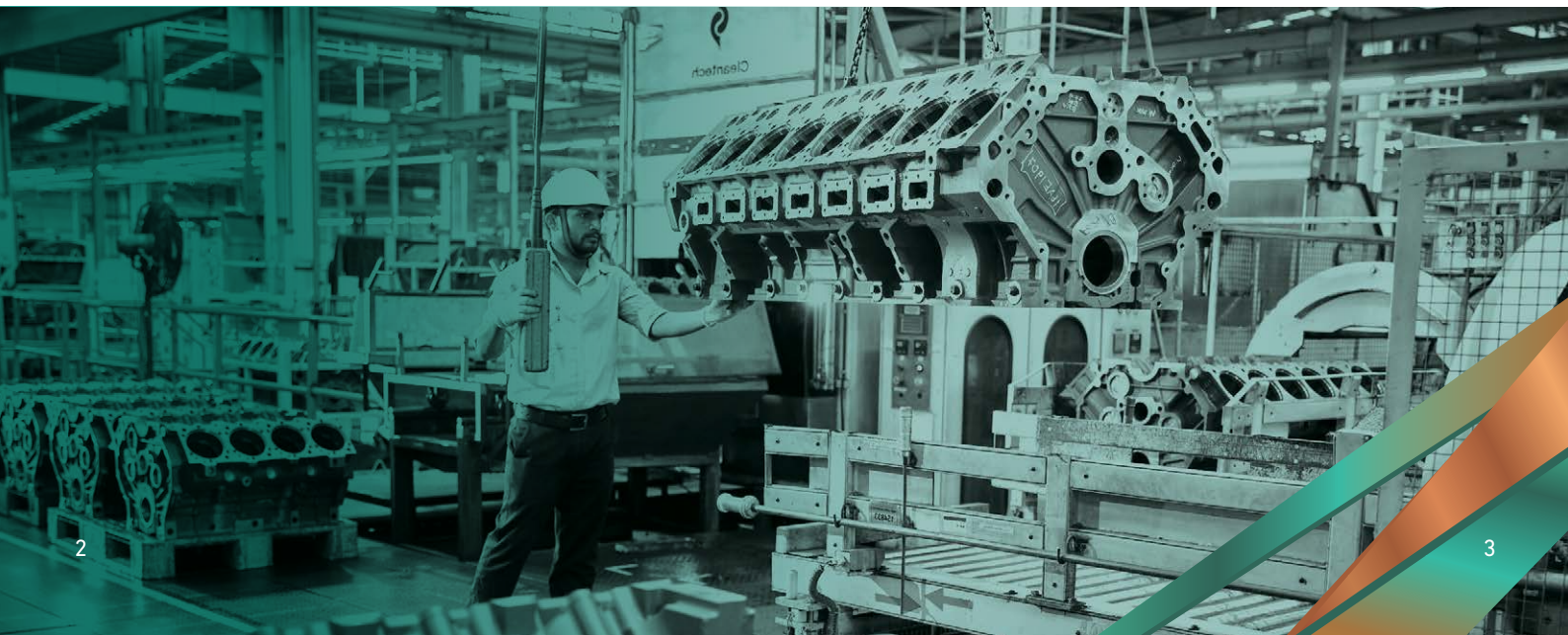
Adherence to Quality Management Systems as per the latest International Standards is a step towards the same. All the plants of Kirloskar Oil Engines are certified to ISO/ TS 16949:2009 or ISO 9001: 2008 series of Standards by ABS Quality Evaluations, U.S.A.

Corporate Quality and Plant level Quality structures enable requisite planning, control and implementation of Company-wide Quality Policy and horizontal deployment of best practices in line with the defined Quality Concept.

Besides traditional Quality functions, additional emphasis is placed on formulating, implementing and monitoring "Quality Improvement Programs" to prevent Critical Quality issues in a structured manner. Six Sigma Black Belt and Green Belt programs have been installed with the help of CII. Enhanced Capabilities have been achieved through process control and excellent manufacturing infrastructure supported by requisite inspection & testing facilities.

Providing high performance-oriented range of engines with a requisite number of quality checks at every stage of value addition.

[www.kirloskaroilengines.com](http://www.kirloskaroilengines.com)



Welcome to Kirloskar Engines South Africa (Pty) Ltd, your trusted distributor of Kirloskar diesel engines and associated equipment. We have proudly been serving the South Africa, Mozambique, and Botswana regions since establishment.

Our focus is clear: providing top-quality engines for various industries including general industrial, construction, agriculture, fire-fighting, dewatering, mining equipment, and diesel-powered generating sets. With us, you can expect quality products at competitive prices, supported by excellent after-sales service to meet the demands of any industry.

We understand the importance of reducing investment and running costs, which is why we offer comprehensive solutions for diesel prime mover requirements. Our versatile engine scope of supply allows us to tailor products to suit specific applications and requirements. Additionally, we excel in repowering solutions for both existing and new applications.

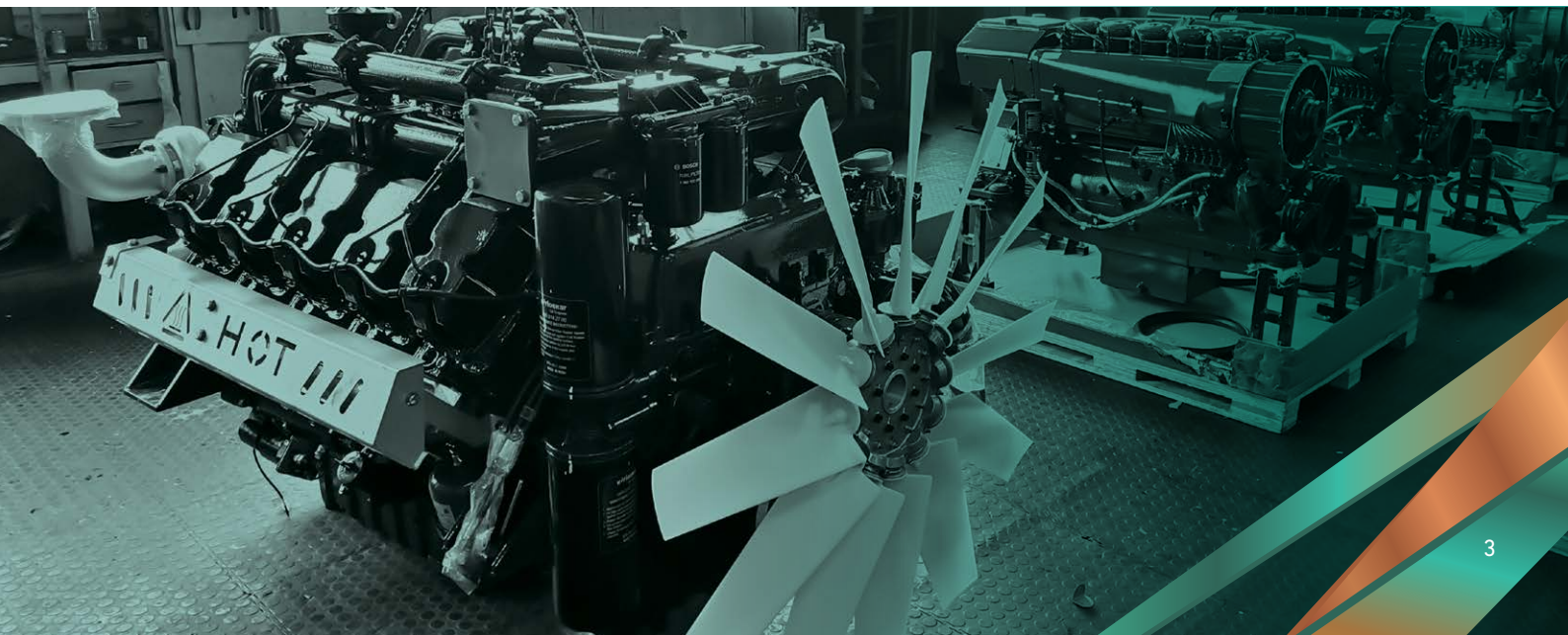
With unit sales in excess of 16,000 engines in Sub-Saharan Africa, we have established strong relationships with various market segment OEMs and end-users across industries. With long-standing engine supply contracts in the mining industry, our client base continues to expand as we introduce the ever-evolving Kirloskar brand to new customers.

The key to our growth lies in our exceptional after-sales service, ensuring minimal downtime through reliable support. We offer extensive spare parts backup, specialized service staff, and a workshop facility capable of rebuilding our products to OEM specifications. Our in-house Dynamometer testing facility guarantees quality performance. With dedicated field service teams and response times within 48 hours, we are fully equipped to meet the industry's after-sales support needs.

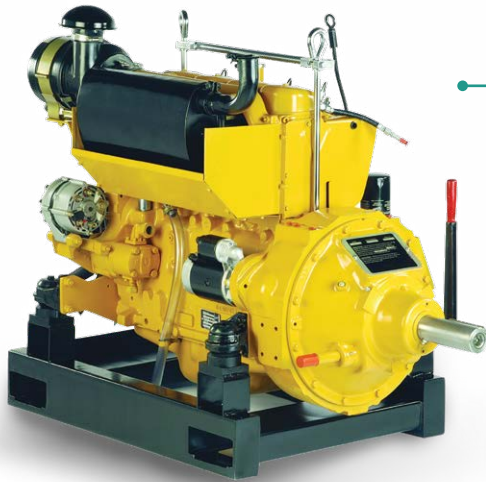
With our headquarters in Johannesburg and branches in Rustenburg and Lydenburg, as well as appointed sub-distributors in South Africa, Botswana, and Mozambique, we ensure convenient access to our products, services and support.

Trust Kirloskar Engines South Africa for reliable power solutions backed by quality, expertise, and exceptional service.

[www.kirloskarsa.co.za](http://www.kirloskarsa.co.za)



# PRODUCT RANGE



## HA SERIES - AIR COOLED ENGINES

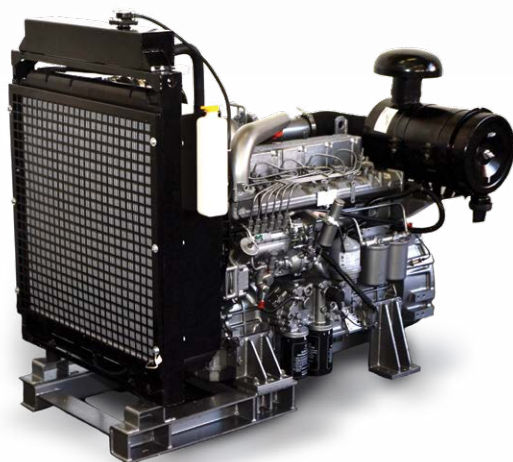
A versatile range of air cooled diesel engines with various supply options for multiple applications covering a power band from 14kW at 1500 RPM to 81kW at 2300 RPM.

Upgraded emission compliant- and electronic versions available on certain models.



## R550 SERIES

A state of the art design, compact envelope size, fuel efficient and low noise producing diesel engine that is available with a power range from 10.3kW to 18.7kW at 1500rpm



## R & K SERIES - WATER COOLED ENGINES

An indigenously designed range of water cooled diesel engines for various applications covering a power band from 15kW at 1500 RPM to 155kW at 2500 RPM.

Flame proof, heat exchanger cooled and emission compliant versions available in certain models.

K series: High powered and compact engines available in certain models.



## SL SERIES - WATER COOLED ENGINES

A robust range of water cooled diesel engines covering a power band from 173kW at 1500 RPM to 277kW at 2350 RPM.

Heat exchanger cooled versions available on certain models.

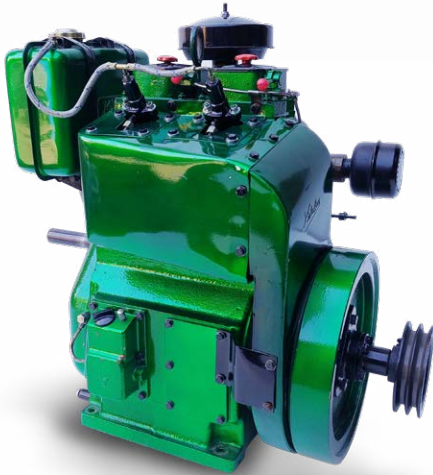


## DV SERIES - WATER COOLED ENGINES

A V-configuration range of water cooled diesel engines with a basic and effective philosophy covering a power band from 360kW to 889kW at 1500 RPM.

Emission norms equivalent to EU Stage II / US TIER II.

Heat exchanger cooled version available on certain models.



## AGRI AIR COOLED ENGINES

A simple yet reliable range of air cooled engines for agricultural applications covering a power band of 4.4kW at 1500 RPM to 11.5kW at 2000 RPM.

Hand start and electric start options available for various applications.



## SPARE PARTS

OEM spare parts are aggressively stocked and competitively priced to support the ever-growing Kirloskar engine population.

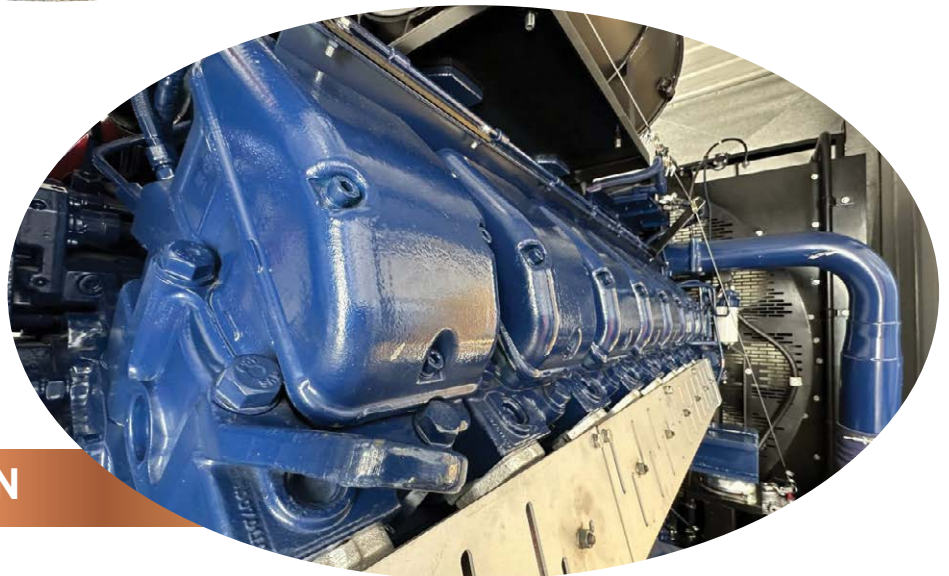
# PRODUCT APPLICATIONS



Engines available in both air- and water cooled variants with variable speed capabilities able to power trackless mining machinery for both surface and underground requirements in hard and soft rock applications

## MINING

Power generation-specific models that are suited for a wide power delivery range from 10kVA to 1000kVA. Well equipped to perform in prime rated application in the harshest conditions.



## POWER GENERATION



"Tuff enough for Africa" our industrial range of air- and water cooled engines that are capable of providing unrivalled reliability and performance for a variety of industrial applications.

## INDUSTRIAL



Air- and water cooled options ranging from 10kW to 532kW. Variable speed options of up to 2500rpm. Naturally aspirated, turbo charged and turbo charged after-cooled models available.

## DEWATERING

Air cooled engines suitable for three-wheel loggers, sugar cane handlers, forklifts, wood chippers, irrigation pumps, bore hole pumps and more that have a proven track record in the industry.



## FORESTRY & AGRICULTURE



Fire Fighting engines with a power range from 20kW to 360kW. Heat exchanger cooled options are available for installations requiring specific compliance.

## FIRE FIGHTING

The logo for Kirloskar South Africa features the word "kirloskar" in a bold, teal, sans-serif font. The letter "i" is stylized with a small orange dot above it and a teal arrow pointing to the right. Below "kirloskar" is the text "South Africa" in a smaller, dark grey, sans-serif font.

# **kirloskar**

## South Africa

### **HEAD OFFICE**

36 Rawbone Street, Ophirton, Johannesburg.

+27(0) 11 493 3330

reception@kirloskarsa.co.za

### **LYDENBURG**

9 Kerk Street, Lydenburg

+27(0) 13 235 1874

lydenburg@kirloskarsa.co.za

### **RUSTENBURG**

Shop No 12, 64 Beyers Naude Street, East End, Rustenburg

+27(0) 14 596 7591

rustenburg@kirloskarsa.co.za