

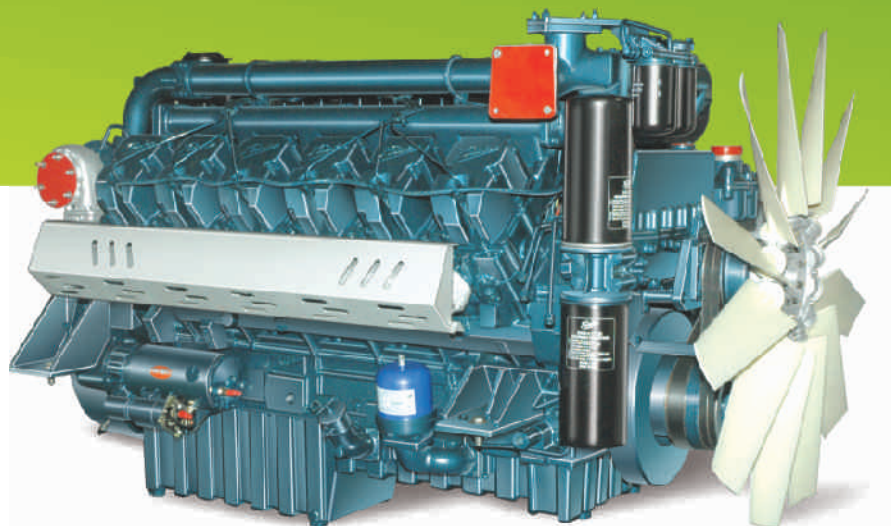


Enriching Lives



Global Power Solutions

Kirloskar DV Series Engines





About us...

Kirloskar Engines: Prime mover to the Indian Nation

Kirloskar Oil Engines Limited, founded in 1946 and popularly known as KOEL is India's leading manufacturer of the finest and widest range of diesel engines from 3 hp to 800 hp and from 2400 hp to 11000 hp. Kirloskar engines are manufactured in both air-cooled and water-cooled versions. Our engines (with annual manufacturing volumes exceeding 320,000 engines) are manufactured in a most eco-friendly environment in India at our Pune, Kagal, Rajkot and Nashik Plants. The manufacturing plants are well equipped with most advance and high-tech machineries, having state of the art cutting edge technology for machining of all the critical components. Kirloskar engines are used as prime movers in Industrial, Agriculture, Power Generation as well as Marine Applications.

The engine manufacturing facilities are continually upgraded and improved to ensure the requisite quality at competitive cost. Critical components like crankcases, crankshafts, camshafts, gear casing, cylinder heads and connecting rod are manufactured in-house. KOEL also manufactures for its exclusive use, Special Purpose Machines to achieve critical degrees of precision that international specifications demand.

We pursue highest quality adherence for zero defect

"The certification demonstrates our commitment to excellence"

- ISO 9001 certification for Quality Management System since 1992 by ABS QE, Inc.
- ISO/TS 16949:2009 for Quality Management System since 2007 by ABS QE, Inc.
- ISO 14001 certification for Environment Management System since 1999 by TUVNORD.
- OHSAS 18001:2007 certificate for Health, Safety & Environment since 2009 by TUVNORD.

At Kirloskar, we believe that the industry and the environment can, and must, coexist in a mutually beneficial way. Bringing this thought into practice is what has driven us to manufacture engines that are not only eco-friendly, but are also manufactured in an environment-friendly way.

Effective support to the product sold is available through the distributors selling the product. Trained technicians and availability of spares at the distributor locations helps minimize the engine downtime.

All pervasive Information Technology in operations

Having foreseen the power of Information Technology to transform the businesses, way back in 1998 KOEL installed the world's leading Enterprise-wide Solution (ERP) - Oracle®. This installation is noted to be one of the most comprehensive installations of Oracle in the manufacturing industry. The installation of ERP in 1998 was followed up with net enabled business processes in 2000. With this initiative, Kirloskar Service Dealers, OEM's, Area Sales Offices, Suppliers and the Logistic providers form a digital community that is ever ready to respond to each customer need efficiently. The Service dealerships are able to respond to customer needs quickly and efficiently by accessing round-the-clock latest service information and parts availability over the internet, 24 hours a day, 365 days a year, including a leap year.

Market we serve

KOEL is the market leader & the most preferred brand of customers from the power generation & cellular industry. The major markets we serve are the service industries like Telecom, Retail, Hotels, Hospitals, Banks, Educational & Financial Institutes, IT/ITES, Multiplex, Infrastructure industries like residential & commercial complex, shopping malls, high-rise buildings and many more.

Our customized power solution is ideally suited for any application whether it is standby or prime application, open or sound proofed.

DV Features:

- Indigenously in-house developed rugged engine design.
- Indigenously developed Fuel injection system designed in collaboration with Bosch.
- New Four valve High pressure Central Injection technology (HPCI)
- Best in class SFC
- Longer Lube Oil Change period
- Low lube oil consumption
- Governing as per ISO 8528, better than G3
- Engine Emission equivalent to Norms of Eu Stage-II /US Tier-II

Engine

Kirloskar makes 4 stroke, vertical, heavy duty, direct injection Diesel Engine equipped with inline indigenously developed fuel injection system, designed in collaboration with 'BOSCH' with two feed pump units and Electronic Governor integral with FIP & Isochronous capability. Engine rating as per BS-5514. Engines are with 'V-type' configuration.



Standard Scope of Supply

- Dry type air cleaner
- 24V Electric Starting with starter & Battery Charging Alternator (Battery and Battery leads not included)
- Battery Charging alternator
- Lube Oil Cooler
- Spin -on type Lube Oil Filter
- Fuel Lift Pump
- Twin Bowl Fuel Filter
- Electronic Governor
- SAE1/14" flywheel housing and Flywheel (with starter Ring) suitable for close coupling of single bearing alternator.
- Exhaust Gas Turbo chargers
- 2 x Residential Exhaust Silencers (Optional)
- Radiator with fan, connections and mounting
- Air to Air Charge Air Cooler



Technical Specifications of DV Series Engines*

ENGINE							
Model	Unit	DV8		DV10	DV12		
Cyl. Arrangement/No. of Stroke		V-Type / 4 stroke					
Aspiration		Turbo Charged & After Cooled					
Rated output (prime power rating as per ISO 3046) at 1500 RPM	kW (hp)	294 (400)	360 (489)	448(609)	532 (723)	552 (750)	
Suitable for Genset Rating - Prime	kVA	320	400	500	600	625	
Bore x Stroke	mm	130 x 150					
Displacement	Ltrs	15.91		19.91	23.88		
Compression Ratio		16.5:1					
Brake Mean effective Pressure (BMEP)	Kg/cm ²	15.92	18.55	17.98	18.73		
Firing order (Starting from gear end)		1-5-7-2-6-3-4-8		1-6-5-10-2-7-3-8-4-9	1-12-5-8-3-10-6-7-2-11-4-9		
Fuel Type		Diesel					
Specific Fuel Consumption @ 100% load**	gms/bhp-hr	143					
Fuel Consumption***	@ 100% load	Litrs/Hr	66	80.4	99.7	121.9	127.1
	@ 75% load		49.5	61.5	76.3	92.7	96.7
Lube Oil Sump Capacity	Ltrs	41		45	50		
Lube Oil System capacity	Ltrs	47		50	57		
Coolant Capacity	Ltrs	123		133	144		
Governing System	Type	Electronic: Integral with FIP & Isochronous capability					
Battery		2 x 12V, 180 AH					
Method of Starting	Volts	24V Electric					
Flywheel Housing / Flywheel Details	SAE	SAE 1 / 14"					
DIMENSIONS							
Overall Dimensions	Length (mm)	1450		1620	1880		
	Width (mm)	1350		1350	1350		
	Height (mm)	1245		1245	1245		
Engine weight (Dry weight of bare engine)	Kg	1620		1840	2060		

In line with our policy of continuous product Development, We reserve the right to change the specification without notice.

* Notes:

1. Engine rating are gross rated output to IS-10002, BS-5514, DIN-6271, ISO-3046/1 standards as appropriate.
2. ** Declared SFC for well run engine tested at standard conditions (+5% Tolerance applicable as per ISO 3046).
3. *** Fuel consumption is considering Specific Gravity of diesel as 0.845 (+5% Tolerance applicable as per ISO 3046).
4. For continuous ratings 10% overload is permitted for 1 hour in every 12 hours consecutive run. For standby ratings no further overlad is permitted.
5. Power reduction: For ambient conditions (i.e altitude, air temperature, humidity) worse than the standard operating conditions, the engine output should be derated in accordance with relevant standards. Please consult KOEL for Precise deration calculations.

KIRLOSKAR OIL ENGINES LIMITED

Kirsons Trading (S.A.) (PTY) Ltd.

Unit B1, The Stables Business Park, Cnr of third avenue & Second Road,
Limbros Park, Modderfontein, Johannesburg.
Tel.: +27(0) 11 553 6900/6903 Email: kirsons@kirloskar.co.za

Kirloskar JLT

P.O. Box 37745, Unit No. 504, Jumeirah Business Centre 5,
Jumeirah Lake Towers, Dubai
United Arab Emirates
Tel : +971 4 443 8591 Fax : +971 4 441 4532
Email: kmef-admin@kirloskar.ae

Kirloskar Kenya Ltd.

P.O. Box 60061 off Dunga Road, Nairobi, Kenya.
Tel.: +254 20 653 6632. Fax: +254 20 653 3390
Email: rspatil@kirloskar.co.ke

Head Office :

Laxmanrao Kirloskar Road, Khadki, Pune 411 003, India.
Tel.: +91(20) 2581 0341 / 2581 5341 Fax : +91(20) 2581 3208, 25810209
For enquiries please visit www.koel.co.in or email: export@kirloskar.com

Authorised Distributor / Dealer



Enriching Lives